



Portable Compressors

VHP300WIR - P425WIR



Powerful. Dependable. Global.

From 100 to 200 psi, IR Portable Compressors Provide the Air Volume You Need at the Pressure Your Job Requires

Standard Features

- Electric brakes with towing lights, side markers and reflectors
- Heavy-duty jacking
- External single-point lifting bail
- Heavy-duty "A" framed drawbar with adjustable height pintle eye and safety chains
- Full length lockable side doors with pneumatic lift springs to provide easy access
- Automatic shutdown protection
 - High discharge air temperature
 - Low engine pressure
 - High engine coolant temperature
 - Low fuel
- Coolbox design allows inside temperature to remain no more than 20°F above outside air temperature, thus prolonging component life and eliminating a long cool down period before routine maintenance can be performed
- New paint process with zinc phosphate base for improved corrosion resistance



Control Panel

Lockable, front mounted instrument and control panel.

Standard instruments include:

- Air discharge pressure gauge
- Quartz hourmeter
- Start-run valve for dependable cold weather starting
- Low fuel shutdown alarm
- Battery no-charge indicator

Available Options

- Single or double hose reels with or without hose or OSHA valves
- Air filter maintenance indicator
- Combination towing lights
- Adjustable height lunette or ball hitch attachment, 19" - 33" in 2" increments
- Keyed ignition
- Less running gear with central drains
- The optional gauges listed below are available as a full-gauge option or individually:
 - Tachometer
 - Combo gauge
 - Volt meter
 - Engine oil pressure
 - Discharge air temperature
 - Engine temperature
 - Diagnostic lights indicate cause of safety shutdown
- Parking brake
- Dual Pressure regulation (125 and 150 psi models only)
- Jockey wheel in place of flat support on jack
- Galvaneel sheet metal for improved corrosion protection
- Pivoting lifting bail for greater security
- 6 kW on-board generator
- (3) 3/4" NPT discharge valves



Optional 6 kW generator



On-Board Aftercoolers and Coalescing Filters

An optional internal aftercooler is available for the 300-425 cfm models. These aftercoolers offer an approach of 15°F to 20°F and are available with optional coalescing filters for cleaner, drier air.

The IQ System™ which eliminates condensate disposal is available on the VHP300WIR, HP365WIR and HP375WJD.



The IR Platinum Series: Redefining the Value of Ownership

With the Platinum Series of portable compressors, IR expands the value of ownership to include every aspect of acquisition, operating cost and resale value.

Reliable Productivity

Through the integration of key components, IR compressors provide high reliability and increased productivity. Protection to the engine starting system eliminates risk of damage to the starter. In-line fuel filter and fuel/water separator minimize downtime due to fuel contamination. Glow plugs facilitate engine starting in cold weather climates without creating risks to the operator.

Lower Maintenance Costs

Engine oil and filter change intervals are extended to 500 hours to reduce maintenance costs.

Single Source for Service

IR confidently backs the Platinum Series line with a standard 2-year/4,000 hours on the power train, including airend, coupling and seal, diesel engine, starter, alternator and fuel system, all through the authorized IR Portable Power distributor, making it easier for you to access service, warranty and parts.

Platinum Warranty

To further enhance the value of your investment, IR offers an extended warranty when original IR fluids, filters and parts are used at the prescribed intervals. This warranty covers the power train for 5 years or 10,000 hours including the coupling and seal.*

Transferable Warranty

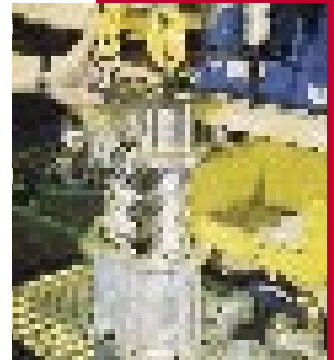
When you are ready to sell your used compressor, the remaining time or hours on the Platinum Warranty is fully transferable to the new owner, greatly increasing the resale value and improving your return on your investment.

To transfer the warranty you will just need to transfer the service records to the new owner who in turn needs to continue performing maintenance at the prescribed interval.

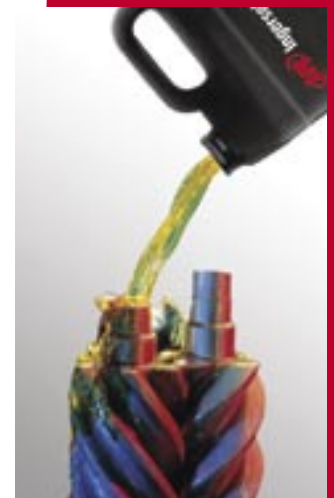
IR Protective Lubricants and Filters

- Designed for Ingersoll-Rand and specially formulated to maximize airend and engine performance.
- Overall protection for the airend bearings and components.
- Extend equipment service life.
- Superior lubricating film strength.
- Excellent low-temperature performance.
- Reduced foaming and fluid loss in severe service conditions.
- Excellent lubrication under normal and severe operating conditions.
- Air filters provide larger filtration area.
- Continued use of Protective Lubricants insures access to the extended Platinum Warranty.
- New compressor units are factory filled with Protective Lubricants to provide immediate protection.

With the Platinum Series of portable compressors, you get the best package available...



...highly reliable screw compressor airend with precision machined rotors...



...Ingersoll-Rand diesel engine with water separator and glow plugs...



...backed by the best warranty in the industry when Ingersoll-Rand fluids and filters are used.

*Ask your program representative for further details.

Ingersoll-Rand Portable Air Compressors

MODEL	VHP300WIR	HP365WIR	HP375WJD	XP375WIR	P425WIR
Engine					
Make	Ingersoll-Rand	Ingersoll-Rand	John Deere	Ingersoll-Rand	Ingersoll-Rand
Model	4IRB7T	4IRB7T	4045T-250	4IRB7T	4IRB7T
(Cylinders) bore x stroke (in)	(4) 4.1 x 4.9	(4) 4.1 x 4.9	(4) 4.2 x 5.0	(4) 4.1 x 4.9	(4) 4.1 x 4.9
(Cylinders) bore x stroke (mm)	(4) 105 x 125	(4) 105 x 125	(4) 107 x 127	(4) 105 x 125	(4) 105 x 125
Displacement (cu in / L)	264 / 4.3	264 / 4.3	276 / 4.5	264 / 4.3	264 / 4.3
Speed: rated (rpm)	2500	2500	2400	2500	2500
idle (rpm)	1700	1700	1500	1700	1700
BHP at rated speed	123	123	125	123	123
Fuel / Cooling	Diesel / Water	Diesel / Water	Diesel / Water	Diesel / Water	Diesel / Water
Electrical System (volts)	12	12	12	12	12
Compressor - Rotary Screw Type					
Oil flooded, single stage	Yes	Yes	Yes	Yes	Yes
Free-air delivery (cfm)	300	365	375	375	425
(M ³ /min)	8.5	10.3	10.6	10.6	12
Rated operating pressure (psig/bar)	200 / 13.8	150 / 10.3	150 / 10.3	125 / 8.6	100 / 6.9
Pressure range (psig)	80 - 225	80 - 175	80 - 175	80 - 150	80 - 125
(bar)	5.5 - 15.5	5.5 - 12.1	5.5 - 12.1	5.5 - 10.3	5.5 - 8.6
Air discharge outlets (qty x size)	1 x 1-1/4NPT	1 x 1-1/4NPT	1 x 1-1/4NPT	1 x 1-1/4NPT	1 x 1-1/4NPT
Fuel Tank Capacity (gal / Lt)	60 / 227	60 / 227	60 / 227	60 / 227	60 / 227
Sound Attenuation - dBA @ 23 ft (7 M)	74	74	75	74	74
Unit with Running Gear					
Overall length (in/mm)	149.9 / 3807	149.9 / 3807	149.9 / 3807	149.9 / 3807	149.9 / 3807
Overall width (in/mm)	78.1 / 1984	78.1 / 1984	78.1 / 1984	78.1 / 1984	78.1 / 1984
Overall height (in/mm)	68 / 1727	68 / 1727	68 / 1727	68 / 1727	68 / 1727
Track width (in/mm)	66.2 / 1681	66.2 / 1681	66.2 / 1681	66.2 / 1681	66.2 / 1681
Shipping weight (lb/kg)	3,998 / 1,813	3,998 / 1,813	4,148 / 1,882	3,998 / 1,813	3,998 / 1,813
Unit Less Running Gear					
Overall length (in/mm)	95.5 / 2425	95.5 / 2425	95.5 / 2425	95.5 / 2425	95.5 / 2425
Overall width (in/mm)	54.1 / 1375	54.1 / 1375	54.1 / 1375	54.1 / 1375	54.1 / 1375
Overall height (in/mm)	51.4 / 1295	51.4 / 1295	51.4 / 1295	51.4 / 1295	51.4 / 1295
Shipping weight (lb/kg)	3,536 / 1,604	3,536 / 1,604	3,686 / 1,672	3,536 / 1,604	3,536 / 1,604

Specifications are subject to change without notice so that improvements can be effected as quickly as possible.



Ingersoll-Rand air compressors are not designed, intended or approved for breathing air. Compressed air should not be used for breathing air applications unless treated in accordance with all applicable codes and regulations.

Nothing contained in this brochure is intended to extend any warranty or representation, expressed or implied, regarding the products described herein. Any such warranties or other terms and conditions of sale shall be in accordance with Ingersoll-Rand's standard terms and conditions of sale for such products which are available upon request.

Product improvement is a continuing goal at Ingersoll-Rand. Designs and specifications are subject to change without notice or obligation.



www.portablepower.irco.com

© 2002 Ingersoll-Rand Co.

Form 2190-A
Printed in USA
06-02

Powerful. Dependable. Global.