

INGERSOLL-RAND®

XHP600 - 1250 / HP1000 - P1600 Compressors

PORTABLE



INGERSOLL-RAND
AIR COMPRESSORS

Compressor Features

- Ingersoll-Rand oil-flooded screw airend
- Compressor oil filtration
 - Dual 25 micron filters are provided for optimum oil filtration
- Oil separation system
 - Two-stage vertical separator tank readily accessible through the large door on the front of the compressor
 - Equipped with an oil level sight glass for simple inspection

Control Panel

- Control panel is hinge-mounted to provide access to all relays, gauge connections, fuses and harness connection blocks
- Interior of control panel is totally enclosed to provide protection of electrical components & connections, significantly improving reliability
- Electrical schematics and parts lists mounted on the back of the control box
- Gauge panel includes:
 - Discharge air temp.
 - Discharge air pressure
 - Engine water temperature
 - Engine oil pressure
 - Hourmeter
 - Fuel level
 - Voltmeter
 - Tachometer

Engine

- Two-Stage air filters
 - Safety elements provide maximum filtration for the engine and airend
 - An automatic filter maintenance indicator signals the operator when to service the elements, insuring maximum filter life without compromising the equipment
- Flexible drive coupling
 - Isolates engine vibrations from compressor for longer life



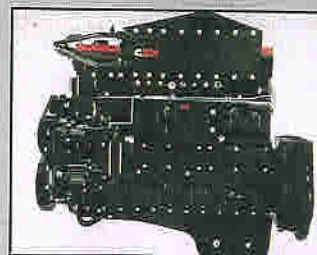
Full Gauge Package

- Diagnostic panel includes:
 - High air discharge temp.
 - High engine water temp.
 - Low engine oil pressure
 - Low fuel level
 - Alternator not charging
 - Low radiator coolant level
 - Air filter restricted

	Indicator Light	Shutdown
High air discharge temp.	<input checked="" type="checkbox"/>	<input checked="" type="checkbox"/>
High engine water temp.	<input checked="" type="checkbox"/>	<input checked="" type="checkbox"/>
Low engine oil pressure	<input checked="" type="checkbox"/>	<input checked="" type="checkbox"/>
Low fuel level	<input checked="" type="checkbox"/>	<input checked="" type="checkbox"/>
Alternator not charging	<input checked="" type="checkbox"/>	<input type="checkbox"/>
Low radiator coolant level	<input checked="" type="checkbox"/>	<input type="checkbox"/>
Air filter restricted	<input checked="" type="checkbox"/>	<input type="checkbox"/>



Caterpillar



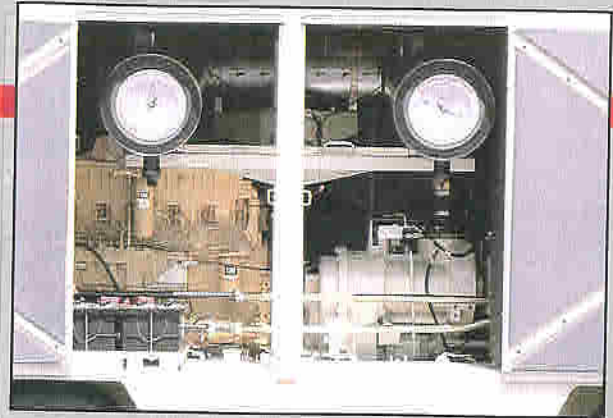
Cummins

Benefits

- Available in high-speed running gear or wagon wheel configuration
- Easy access
 - Five large, lockable access doors provide easy access to all components
 - Large, conveniently located air filters
- Cool box design
 - Inside temperature remains no more than 20°F above outside air temperature
 - Prolongs component life
 - Eliminates a long cool down period before maintenance can be performed
- Automatic safety shutdowns for:
 - High compressor discharge air temperature
 - Low engine oil pressure
 - High engine coolant temperature
 - Low fuel level
- Meets EPA and EEC sound requirements
 - Sound level of less than 76 dBA at 7 meters
- Single-point, internal lifting bail for increased safety and security
- Easy-to-maintain, side-by-side coolers
- Refueling
 - Well-vented dual fuel fillers are provided on both the street and curb sides of the compressor

Options

- AC powered cold weather kit
 - Recommended for subzero starting
 - Electrically actuated ether injection system for improved cold weather starting
 - Unloader control system to reduce engine load during starting
- European CE Mark



High-Speed Running Gear

- Fast track design with tandem axles
 - Allows towing at highway speed
 - Provides tight turning radius for greater maneuverability
 - Meets military specifications for greater durability
- Added standard features for this configuration:
 - Towing lights, side markers and reflectors to US Federal and Canadian requirements
 - Electric brakes
 - Central drains

Specifications

Model	XHP650WCAT	XHP750WCAT	XHP825WCAT	XHP900WCAT	XHP900SCAT	XHP1070WCAT
Engine						
Make	Caterpillar	Caterpillar	Caterpillar	Caterpillar	Caterpillar	Caterpillar
Model	3306 TA ¹	3306 TA ¹	3306 TA ¹	3406 TA ¹	3406 TA ¹	3406 TA ¹
(Cylinders) bore x stroke (in) (mm)	(6) 4.75 x 6.0 (6) 121 x 152	(6) 4.75 x 6.0 (6) 121 x 152	(6) 4.75 x 6.0 (6) 121 x 152	(6) 5.4 x 6.5 (6) 137 x 165	(6) 5.4 x 6.5 (6) 137 x 165	(6) 5.4 x 6.5 (6) 137 x 165
Displacement (cu in/L)	638/10.4	638/10.4	638/10.4	893/14.6	893/14.6	893/14.6
Speed: rated/idle (rpm)	1850/1300	1850/1300	1850/1400	1800/1200	1800/1200	1800/1200
Bhp at rated speed	310	310	310	400	400	465
Fuel/Cooling	Diesel/Water	Diesel/Water	Diesel/Water	Diesel/Water	Diesel/Water	Diesel/Water
Electrical System (volts)	24	24	24	24	24	24
Fuel tank capacity (gal/L)	180/681	180/681	180/681	180/681	Optional ³	180/681
Compressor	Rotary-Screw Type, Oil-Flooded, Two-Stage					
Free-air delivery (cfm/L per sec) ²	650/307	750/354	825/390	900/425	900/425	1070/505
Rated operating pressure (psig/bar)	350/24.1	300/20.7	250/17.2	350/24.1	350/24.1	350/24.1
Pressure Range (psig) (bar)	150 to 375 10.3 to 25.9	150 to 325 10.3 to 22.4	150 to 275 10.3 to 18.9	150 to 375 10.3 to 25.9	150 to 375 10.3 to 25.9	150 to 375 10.3 to 25.9
Air discharge outlets (qty) size in.	(1) 3	(1) 3	(1) 3	(1) 3	(1) 3	(1) 3
Unit w/Wagon Wheel Running Gear						
Overall length (in/mm)	191/4851	191/4851	191/4851	191/4851	N/A	204/5182
Overall width (in/mm)	88.6/2250	88.6/2250	88.6/2250	88.6/2250	N/A	88.6/2250
Overall height (in/mm)	101.5/2578	101.5/2578	101.5/2578	101.5/2578	N/A	101.5/2578
Track width (in/mm)	70/1778	70/1778	70/1778	70/1778	N/A	70/1778
Shipping weight ⁴ (lb/kg)	12300/5579	12300/5579	12300/5579	13600/6169	N/A	13900/6305
Unit w/High-Speed Running Gear						
Overall length (in/mm)	261/6629	261/6629	261/6629	261/6629	N/A	274/6960
Overall width (in/mm)	88.6/2250	88.6/2250	88.6/2250	88.6/2250	N/A	88.6/2250
Overall height (in/mm)	102/2591	102/2591	102/2591	102/2591	N/A	102/2591
Track width (in/mm)	70/1778	70/1778	70/1778	70/1778	N/A	70.9/1800
Shipping weight ⁴ (lb/kg)	13700/6214	13700/6214	13700/6214	15000/6803	N/A	15300/6940
Unit Less Running Gear						
Overall length (in/mm)	187/4750	187/4750	187/4750	187/4750	Skid Mount 222/5639	200/5080
Overall width (in/mm)	88.5/2248	88.5/2248	88.5/2248	88.5/2248	89/2261	88.5/2248
Overall height (in/mm)	89.6/2276	89.6/2276	89.6/2276	89.6/2276	98/2490	89.6/2276
Shipping weight ⁴ (lb/kg)	12700/5761	12700/5761	12700/5761	12700/5761	12800/5806 ⁵	13000/5897

Specifications are subject to change without notice so that improvements can be effected as quickly as possible.

¹ Turbocharged and Aftercooled (TA)

² ISO 1217±4%

³ Fuel tanks available as an option on export units only; 180 gal. capacity

⁴ Shipping weight includes all fluids except fuel

⁵ Unit weight without fuel tanks

XHP1250SCAT	HP1000WCU	XP1200WCU	P1300WCU	HP1300WCU	XP1400WCU	P1600WCU
Caterpillar 3412DITA (12) 5.4 x 6.0 (12) 137 x 152 1649/27.0 2100/1200 650 Diesel/Water 24 N/A	Cummins N14-C TA ¹ (6) 5.5 x 6.0 (6) 140 x 152 855/14 1800/1200 360 Diesel/Water 24 180/681	Cummins N14-C TA ¹ (6) 5.5 x 6.0 (6) 140 x 152 855/14 1800/1200 360 Diesel/Water 24 180/681	Cummins N14-C TA ¹ (6) 5.5 x 6.0 (6) 140 x 152 855/14 1800/1200 360 Diesel/Water 24 180/681	Cummins N14-C TA ¹ (6) 5.5 x 6.0 (6) 140 x 152 855/14 1800/1200 460 Diesel/Water 24 180/681	Cummins N14-C TA ¹ (6) 5.5 x 6.0 (6) 140 x 152 855/14 1800/1200 460 Diesel/Water 24 180/681	Cummins N14-C TA ¹ (6) 5.5 x 6.0 (6) 140 x 152 855/14 1800/1200 460 Diesel/Water 24 180/681
Rotary-Screw Type, Oil-Flooded, Single-Stage						
1250/590 350/24.1 150 to 375 10.3 to 25.9 (1) 3	1000/472 150/10.3 80 to 175 5.5 to 12.1 (1) 3	1200/566 125/8.6 80 to 150 5.5 to 10.3 (1) 3	1300/613 100/6.9 80 to 125 5.5 to 8.6 (1) 3	1300/613 150/10.3 80 to 175 5.5 to 12.1 (1) 3	1400/661 125/8.6 80 to 150 5.5 to 10.3 (1) 3	1600/755 100/6.9 80 to 125 5.5 to 8.6 (1) 3
N/A N/A N/A N/A N/A	191/4851 88.6/2250 101.5/2578 70/1778 14500/6577	191/4851 88.6/2250 101.5/2578 70/1778 14500/6577	191/4851 88.6/2250 101.5/2578 70/1778 14500/6577	191/4851 88.6/2250 101.5/2578 70/1778 14500/6577	191/4851 88.6/2250 101.5/2578 70/1778 14500/6577	191/4851 88.6/2250 101.5/2578 70/1778 14500/6577
N/A N/A N/A N/A N/A	261/6629 88.6/2250 102/2591 71/1803 16100/7303	261/6629 88.6/2250 102/2591 71/1803 16100/7303	261/6629 88.6/2250 102/2591 71/1803 16100/7303	261/6629 88.6/2250 102/2591 71/1803 16100/7303	261/6629 88.6/2250 102/2591 71/1803 16100/7303	261/6629 88.6/2250 102/2591 71/1803 16100/7303
Skid Mount 228/5791 90/2286 100/2540 20750/9412	187/4750 88.5/2248 89.6/2276 13600/6169	187/4750 88.5/2248 89.6/2276 13600/6169	187/4750 88.5/2248 89.6/2276 13600/6169	187/4750 88.5/2248 89.6/2276 13600/6169	187/4750 88.5/2248 89.6/2276 13600/6169	187/4750 88.5/2248 89.6/2276 13600/6169

XHP900SCAT

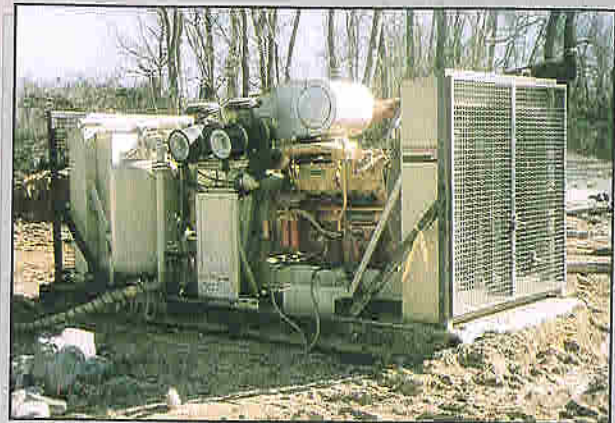


- Ingersoll-Rand offers a skid-mounted, high-pressure unit with the same reliable design features as our portable units. The unit is designed for stationary applications such as oil and gas drilling, and comes mounted on a heavy-duty skid, without on-board fuel tanks and without an enclosure. The fuel tanks can be added as an option on *EXPORT* units only. All service drains are centrally located allowing maintenance to be performed quickly and easily.

Options

- Aftercooler with water separator provides approach temperatures of 15°F and is completely integral to the unit
- Aftercooler condensate is piped into the engine exhaust system where it is burned off into the atmosphere for convenient operation

XHP1250SCAT



Compressor Features

- Highly reliable two-stage screw compressor delivers 1250 cfm at 350 psig
- Full flow oil pump for positive lubrication
- Two-stage, heavy-duty dry type replaceable air filter
- Dual spin on 25 micron oil filter elements

Package Design Features

- Heavy-duty oil field skid with rectangular structural tubing and full mud pan
- Utilizes proven components
- Front and rear brush guards

Engine Features

- Conservative engine selection provides optimum operating margin for oil field operations
- High altitude operating capability
- Electric starting system

Instrument Panel Features

- Instrument panel with electrical gauges
- Safety shutdowns for high engine water temperature, low engine oil pressure, and high compressor discharge temperature

XHP600/750SCAT (EXPORT ONLY)



Compressor Features

- Two-stage, heavy-duty replaceable air filter
- Two-stage horizontal oil separation system with oil level sight gauge
- Flexible drive coupling
- Dual spin on 25 micron oil filter elements
- Two-stage airend with an oil pump for positive lubrication

Package Design Features

- Compact design offers easy transportation and maneuverability
- Large access doors on each side provide easy access to all components

Control Panel

- Standard gauges include:
 - Hourmeter
 - Voltmeter
 - Tachometer
 - Ammeter
 - Fuel level
 - Discharge pressure
 - Engine oil pressure
 - Engine fuel pressure
 - Engine water temperature
 - Discharge air temperature
- Air filter maintenance indicators

Standard Safety Features

- Automatic safety shutdowns
 - High discharge air temperature
 - Low engine oil pressure
 - High engine water temperature
- Automatic blowdown valve
- Minimum pressure valve
- ASME approved high pressure relief valve

Model	XHP600SCAT	XHP750SCAT
Engine		
Make	Caterpillar	Caterpillar
Model	3306 TA*	3306 TA*
(Cylinders) bore x stroke (in)	(6) 4.75 x 6.0	(6) 4.75 x 6.0
(mm)	(6) 121 x 152	(6) 121 x 152
Displacement (cu in/L)	638/10.4	638/10.4
Speed: rated/idle (rpm)	2100/1200	2100/1200
Bhp at rated speed	300	300
Fuel/cooling	Diesel/Water	Diesel/Water
Electrical System (volts)	24	24
Fuel tank capacity (gal/L)	144/545	144/545
Compressor, Rotary-Screw Type, Oil-Flooded, Two-Stage		
Free-air delivery (dfm/L per sec)	600/283	750/354
Rated operating pressure (psig/bar)	350/23.8	300/20.4
Pressure Range (psig) (bar)	150 to 375 10.3 to 25.8	150 to 325 10.3 to 22.4
Air discharge outlets (qty.) size in.	(1) 3	(1) 3
Unit with Running Gear		
Overall length (in/mm)	150.5/3823	150.5/3823
Overall width (in/mm)	80.3/2040	80.3/2040
Overall height (in/mm)	85/2159	85/2159
Track width (in/mm)	64/1626	64/1626
Shipping weight** (lb/kg)	11100/5035	11100/5035
Unit Less Running Gear		
Overall length (in/mm)	152/3861	152/3861
Overall width (in/mm)	81/2057	81/2057
Overall height (in/mm)	74/1880	74/1880
Shipping weight** (lb/kg)	9385/4257	9385/4257

*Turbocharged and Aftercooled (TA)

**Shipping weight includes all fluids *except* fuel



Ingersoll-Rand air compressors are not designed, intended or approved for breathing air. Compressed air should not be used for breathing air applications unless treated in accordance with all applicable codes and regulations.

Nothing contained in this brochure is intended to extend any warranty or representation, expressed or implied, regarding the products described herein. Any such warranties or other terms and conditions of sale shall be in accordance with Ingersoll-Rand's standard terms and conditions of sale for such products which are available upon request.

Product improvement is a continuing goal at Ingersoll-Rand. Designs and specifications are subject to change without notice or obligation.

INGERSOLL-RAND
AIR COMPRESSORS

Portable Compressor Division
Ingersoll-Rand Company
Mocksville, NC 27028